



World's most advanced
seamless architectural acoustic system



«Pioneers in the field of high quality seamless acoustic plaster»



«Acoustics has been the core business for more than 30 years»


«Lucerne, Switzerland»



Our HQ is located on the Marmorweg No. 10 in Baldegg, Lucerne.
Which means Marble Road | Way | Path No. 10

Acoustics: fundamental to the user experience.

- Transformed clarity of speech and quality of sound
- Increased interior speech privacy
- Increased perception of architectural quality and luxury
- Enhanced collaboration, inclusivity & productivity
- More focus, fewer mistakes
- Better sounding music and media
- Improved comfort and reduced stress



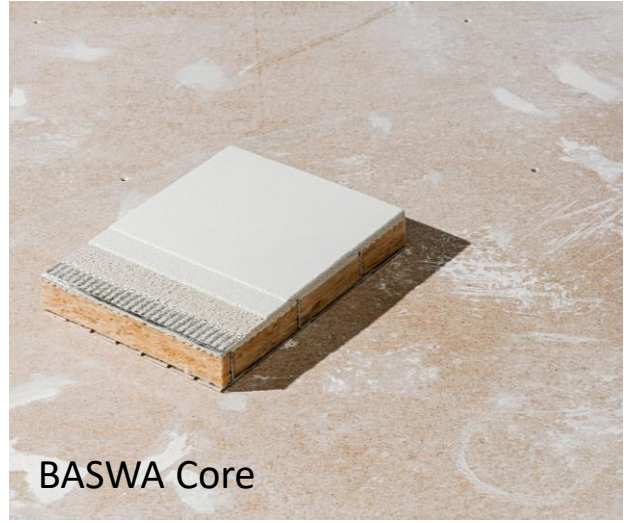
«Clever solutions & design freedom»

The seamless BASWA acoustic ceilings adapt to the architectural concept without being in competition with it.



What is BASWA?

- The original acoustic plaster system, produced and pioneered in Switzerland
- The most advanced range of system options for ultimate versatility
- Durable, beautiful **Carrara marble plaster** finishes
- **Trowel applied** for best finish, precise skim thickness and real-world acoustic performance
- **Airtight system** with matched porosity components, to maintain long term homogenous appearance
- Specially formulated acoustic panels, not repurposed thermal insulation
- **Porous panel joint filler** means 100% absorptive surface area where expected, for verifiable acoustic performance



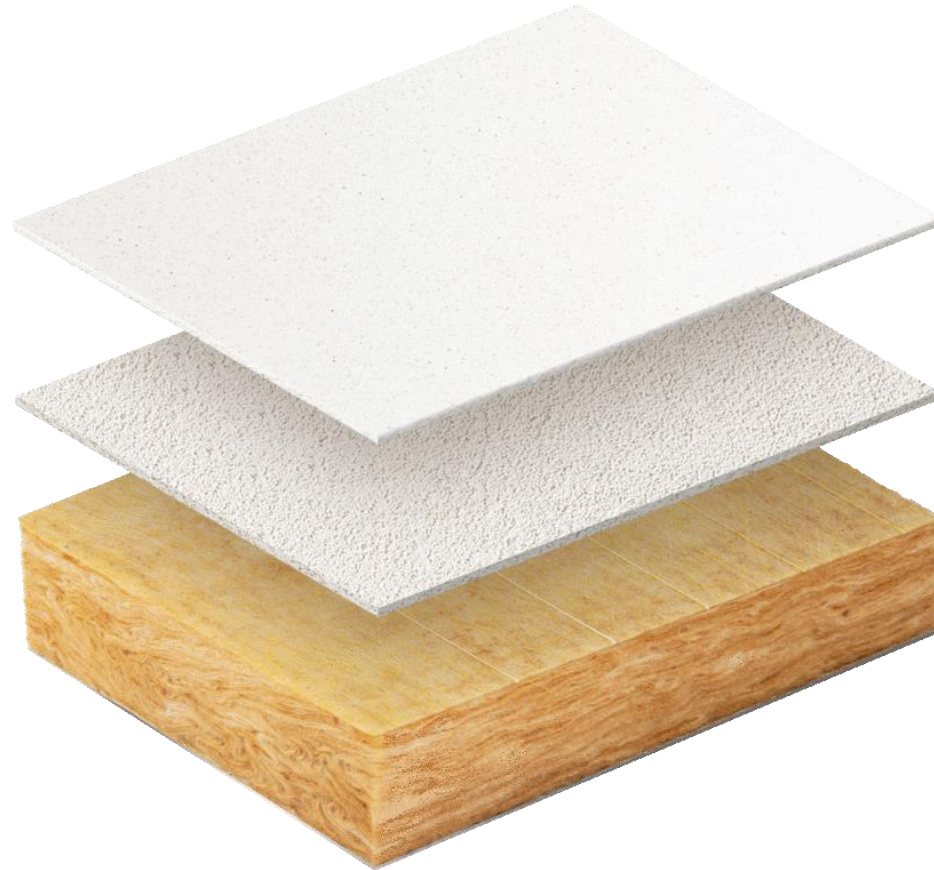
BASWA acoustic solutions



recycled glass



hemp/hemp fibres



recycled marble



recycled
mineral wool

Colourful



BASWA Phon

Seamless surface



Base 0.7 mm



Fine 0.5 mm



Classic Top 0.3 mm



Classic Fine 0.5 mm



Classic Base 0.7 mm

System thickness 30, 40, 50 & 70 mm

Surface coat options

Standard trowelled smooth application shown – bespoke textures also available



Base

0.7 mm marble granulometry

(or Classic Base, 2 coats)



Fine

0.5 mm marble granulometry

(or Classic Fine, 2 coats)



Classic Top

0.3 mm marble granulometry

(2 coat system only)

«BASWA Basic – The best choice for Walls»



Base 0.7 mm



System thickness 30 mm



Top 0.3 mm

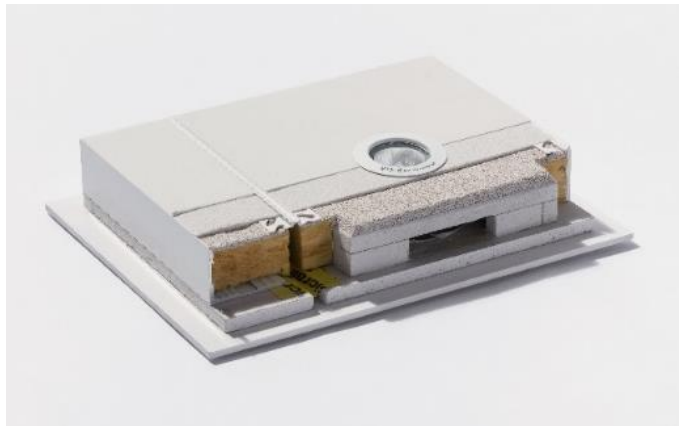


Fine 0.5 mm

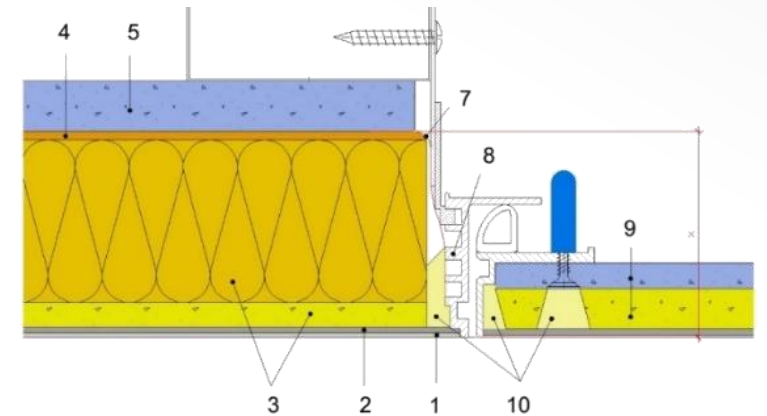
Matched component porosity – BASWA systems

All sub-surface components are produced to match the porosity of the acoustic panels. This maintains the long-term homogenous appearance of the surface:

- Panel joints
- Access panels
- Installation platforms
- Non-acoustic areas



Installation platform



Access hatch

Reliable absorption performance up to class NRC 1.0

The original - 30 years

Almost unlimited design options flat, vault, color, textured

Robust natural marble finish

Sustainable and natural materials

Homogenous aging

Wet areas (swimming pools and spa facilities)

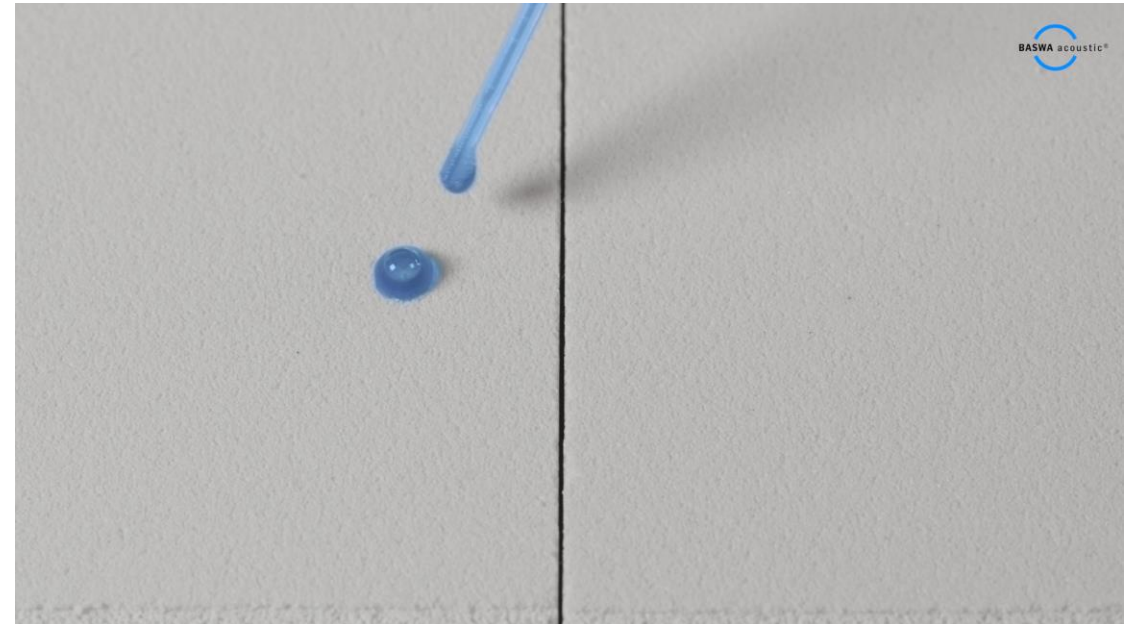
Non-flammable (Fire prevention class A2; S1-d0)

«A sustainable solution. Cleaning & Maintenance.»



BASWA Clean

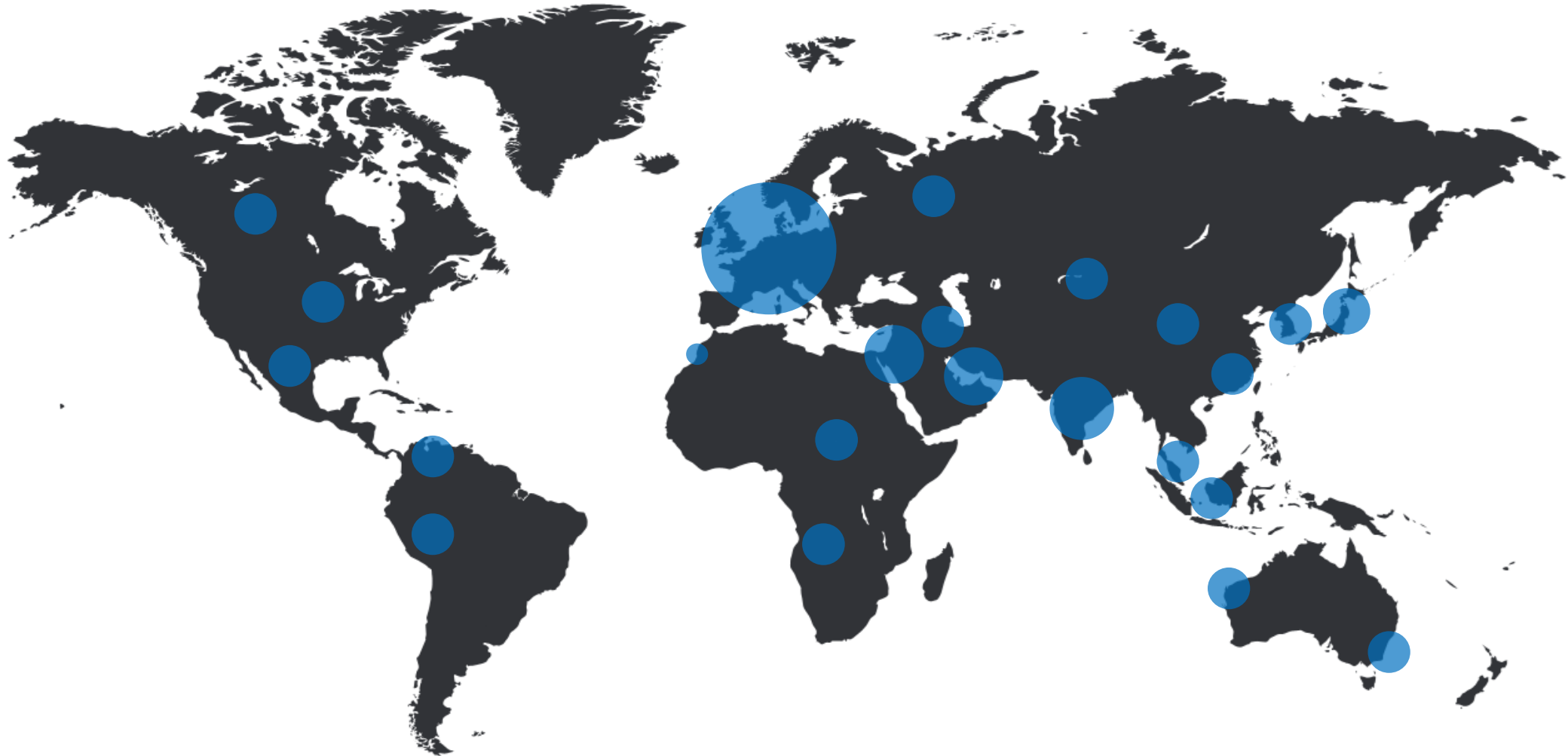
BASWA Protect



«High-quality handcraftmanship thanks to our certified Partners.»



«International cooperation»

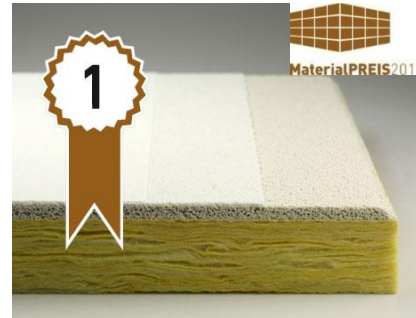


«Award winning system»



Paris
Décibel d'Or,
2009

15^e ÉDITION
DÉCIBEL D'OR



Stuttgart
Materialpreis, 2013
INNOVATION



New York
Winner of A+
Awards 2015



**LOVE
THAT
DESIGN**

Dubai
Love That Design,
Sustainability Award
2021



Zürich
Swiss Technology
Award 2016

#HealthyArchitecture



www.baswa.com